

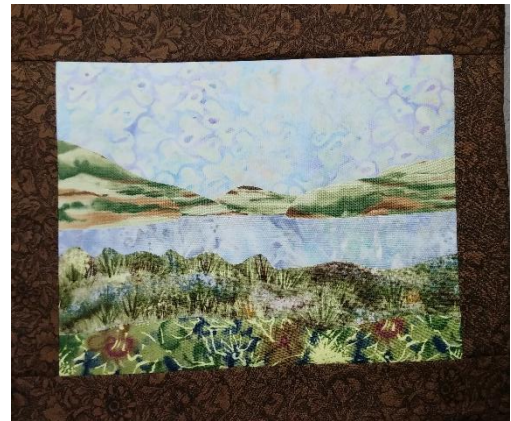
Landscape Quilt Workshop – Julia Graves, www.soquilts.com

Description - Take a favorite photo and recreate it in fabric. What a wonderful way to remember a favorite trip or vacation spot! We will discuss simplifying the design and creating a pattern, then discuss techniques to accomplish the design, including piecing, fusing or applique. I recommend fusing directly to cotton batting as the easiest method, but you may use your method of choice.

Class includes many tips on how to achieve the effect you want with the least amount of fuss. We also discuss how to create depth using perspective, shading and color. You will leave class with a great start and a roadmap of how to accomplish your chosen design.

Class Preparation and Supply List

- **Photo** – bring a photo that shows what you want to create and that you have the copyright or permission to use. Make a black/white copy, and if possible, enlarge (color or b/w is fine) to the size you want to work from. Keeping it under 24" will be more manageable; 12" x 18" is a fine size. This is a landscape class – faces are very hard to do. The easiest will be a scene with large natural elements – sky, mountains, lake; sky, water, beach; sky, fields; etc.
 - I recommend cropping your photo to focus on the really interesting part. Most phones have this kind of editing software. Try putting the focal point (the really interesting part) at the same position as any of the four intersecting corners of a nine-patch – one third side to side and one third top to bottom.
 - I recommend you email me your proposed photo and I can give you feedback as to how challenging it might be – juliagraves82@gmail.com
- **Design tools** – drawing paper, freezer paper, pencils, eraser, pens, rulers, glue stick, tape, dry erase marker or permanent marker.
- Piece of **clear vinyl** the size of your finished project to help place pieces (any clear plastic will work, as will a cut open Ziploc bag and you can tape several together if needed)
- **Cutting and Sewing Supplies** – sharp small scissors, rotary cutter and matt, and thread (many options, including neutrals – white, beige, grays, black; colors or variegated to match your fabrics; monofilament; etc)
- **Sewing machine**, needles, bobbins, pins, power strip, foot pedal, extension cord, power strip, etc – you may not need any of this until the border/quilting/binding stages if fusing.
- **Fusible** (if fusing – recommended) – 1 to 2 yards or more of a fusible web such as Steam a Seam 2 Lite, Wonder Under, Misty fuse, etc – must have fusible on both sides. 1 yard is enough for a 12" x 18" size; more if you're working bigger. Bring the package instructions for the brand you will be using. Select the light version whenever possible.
- **Ironing Supplies** – something to protect the classroom irons from the fusible – Teflon pressing sheet or parchment paper; iron cleaner (optional – only if have it). Iron if not provided by class site.



[Juliagraves82@gmail.com](mailto:juliagraves82@gmail.com) www.instagram.com/juliagraves82 www.facebook.com/soquilts
www.soquilts.com <https://www.etsy.com/shop/JuliaGravesSOQuilts> <https://soquilts.square.site/>
Creative Spark Affiliate Link: <https://ctpub.com/pages/author-bio/julia-graves?ref=JULIAGRAVES>

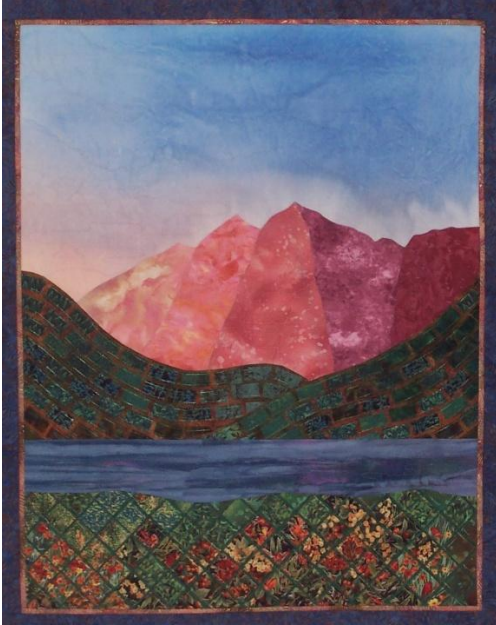
Landscape Quilt Workshop – Julia Graves, www.soquilts.com

- **Fabrics:** Fabrics for each portion of your landscape – more is better. Let your fabric do the work. Pay attention to scale (how large the fabric design is for where it will go in the landscape). Batik, hand-dyes, mottled, multicolor and floral fabrics work well. Avoid solids and distinct geometric patterns. Check the wrong side of fabric for a lighter version.
- **Backing** – at least 8” longer and wider than your planned finished size of picture – more if you are planning on borders larger than 2” wide on each side.
- **Batting:** COTTON batting needs to be at least 8” longer and wider than your planned finished size – more if you are planning on borders larger than 2” wide on each side. Don’t use polyester – you will be ironing your fused fabric to the batting and polyester can melt.
- **Optional** – light table. Useful for tracing your pattern and placing the freezer paper pattern on your fabric. Can also use a window for tracing, and hold fabric up to the light while placing the pattern.
- **Optional** - Permanent fabric markers if you have them, especially browns, grays, blacks, yellows, reds and greens – for adding small details as desired. Fabric paints, beads, embellishments, etc. You probably won’t get to this in class, but you can plan for the future!



A Light in the Forest – Julia Graves

Juliagraves82@gmail.com www.instagram.com/juliagraves82 www.facebook.com/soquilts
www.soquilts.com <https://www.etsy.com/shop/JuliaGravesSOQuilts> <https://soquilts.square.site/>
Creative Spark Affiliate Link: <https://ctpub.com/pages/author-bio/julia-graves?ref=JULIAGRAVES>



Maroon Bells – Julia Graves



Dragon Fly – Julia Graves

- Interested in more? I sell **patterns** on my Etsy shop, <https://www.etsy.com/shop/JuliaGravesSOQuilts>.
- Sign up for my **newsletter** at www.squilts.com and download a **free handout**
- I'm on **Facebook** www.facebook.com/squilts and **Instagram** www.instagram.com/juliagraves82
- I teach **classes** on **Creative Spark Online** – If you use my Creative Spark Affiliate Link: <https://ctpub.com/pages/author-bio/julia-graves?ref=JULIAGRAVES>, I earn a small commission at no cost to you.

You can also get wonderful **Color Tools** (Search on Joen) and other helpful notions at CTPub using my link.



Juliagraves82@gmail.com www.instagram.com/juliagraves82 www.facebook.com/squilts
www.squilts.com <https://www.etsy.com/shop/JuliaGravesSOQuilts> <https://soquilts.square.site/>
Creative Spark Affiliate Link: <https://ctpub.com/pages/author-bio/julia-graves?ref=JULIAGRAVES>